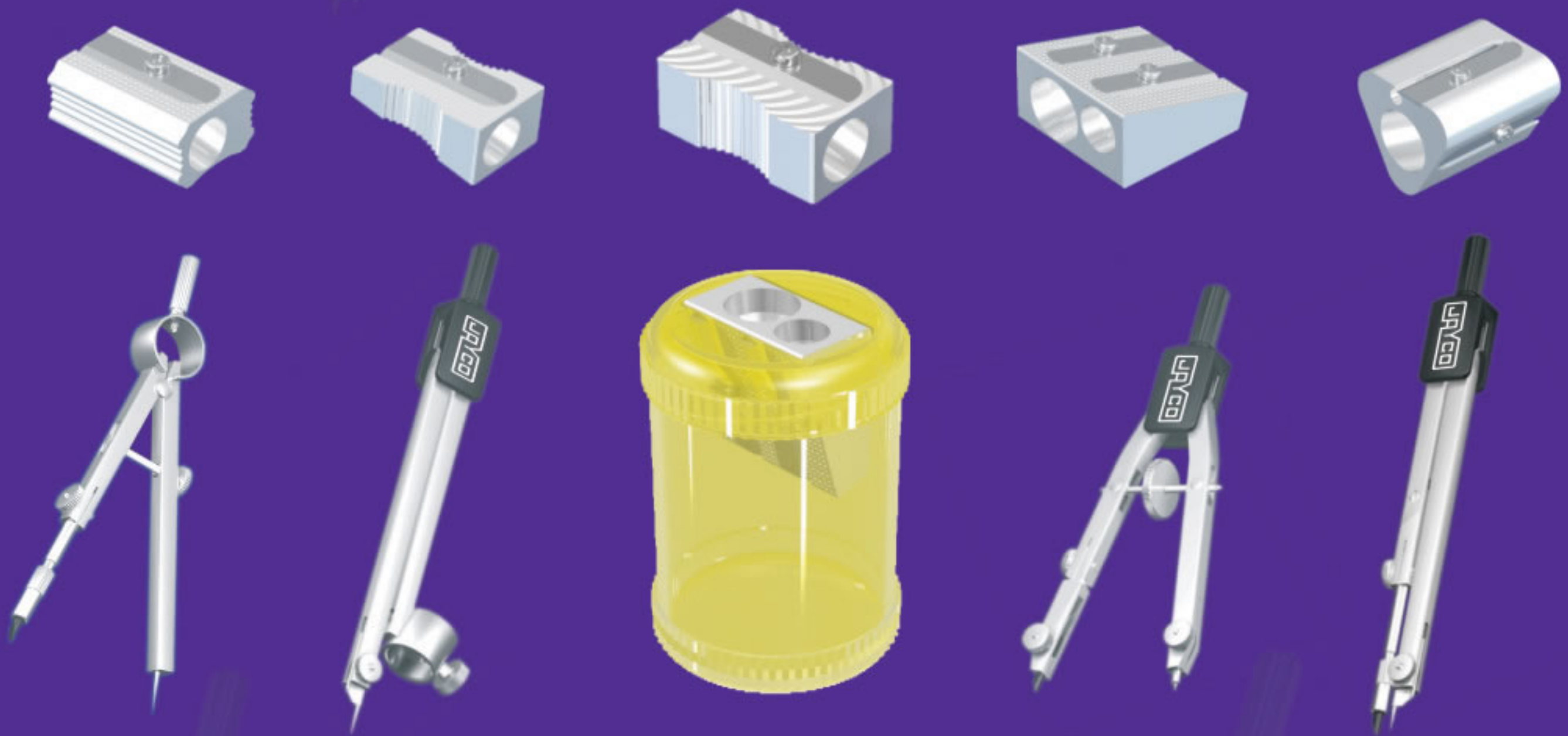




Pencil Sharpeners-Compasses

Pointing in the right direction



JAYCO
INDUSTRIES

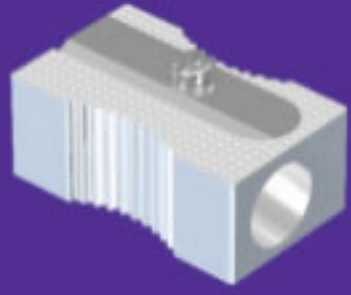
www.jaycoindustries.co.in

pointing in the right direction



Pencil Sharpeners-Compasses

PENCIL SHARPENERS
AFILALAPIZ
TAILLE-CRAYONS
BLEISTIFTSPITZER



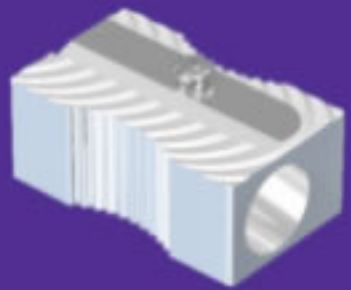
J242
One Hole Aluminium Sharpener

Bulk		
Packing (Pcs.)	G.Wt-Kg.	CBM
20-200-1000-2000	23.000	0.0175



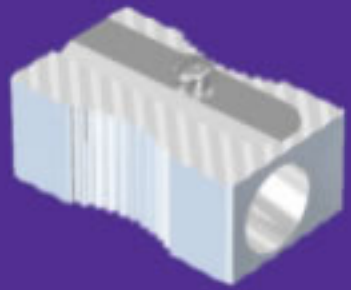
J242 R
One Hole Aluminium Sharpener
(Round Corners)

Bulk		
Packing (Pcs.)	G.Wt-Kg.	CBM
20-200-1000-2000	23.000	0.0175



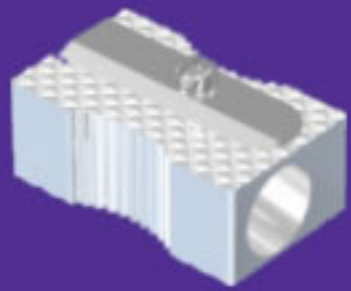
J242 DC1
One Hole Aluminium Sharpener
Diamond Cut 1

Bulk		
Packing (Pcs.)	G.Wt-Kg.	CBM
20-200-1000-2000	23.000	0.0175



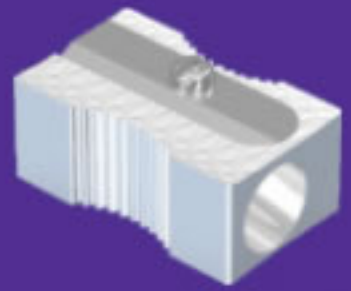
J242 DC2
One Hole Aluminium Sharpener
Diamond Cut 2

Bulk		
Packing (Pcs.)	G.Wt-Kg.	CBM
20-200-1000-2000	23.000	0.0175



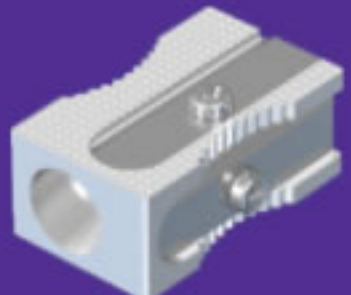
J242 DC3
One Hole Aluminium Sharpener
Diamond Cut 3

Bulk		
Packing (Pcs.)	G.Wt-Kg.	CBM
20-200-1000-2000	23.000	0.0175



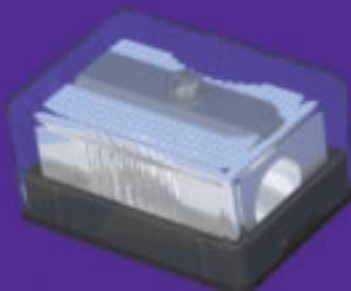
J242 DC4
One Hole Aluminium Sharpener
Diamond Cut 4

Bulk		
Packing (Pcs.)	G.Wt-Kg.	CBM
20-200-1000-2000	23.000	0.0175



J242 SB
One Hole Aluminium Sharpener
with Spare Blade

Bulk		
Packing (Pcs.)	G.Wt-Kg.	CBM
20-200-1000-2000	22.500	0.0175



J242 DB
One Hole Aluminium Sharpener
in Plastic Box

Bulk		
Packing (Pcs.)	G.Wt-Kg.	CBM
20-200-1000-2000	31.000	0.0317



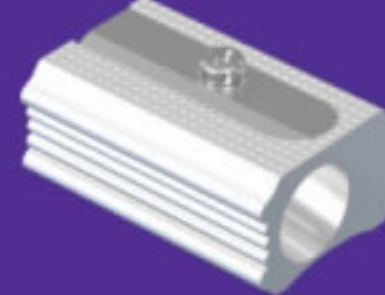
J242 DB / SB1
One Hole Aluminium Sharpener
in Plastic Box with 1 Spare Blade

Bulk		
Packing (Pcs.)	G.Wt-Kg.	CBM
20-200-1000-2000	32.000	0.0317



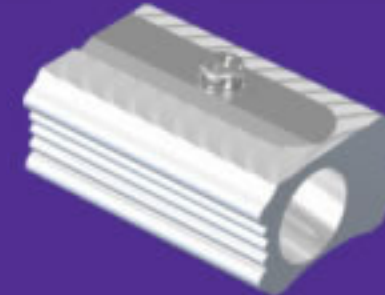
J242 DB / SB2
One Hole Aluminium Sharpener
in Plastic Box with 2 Spare Blade

Bulk		
Packing (Pcs.)	G.Wt-Kg.	CBM
20-200-1000-2000	34.000	0.0317



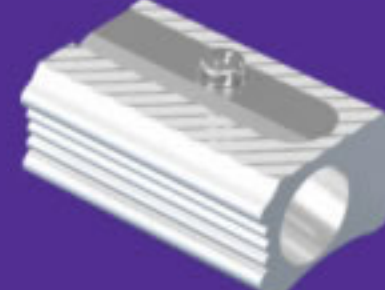
J252
One Hole Aluminium Sharpener

Bulk		
Packing (Pcs.)	G.Wt-Kg.	CBM
20-200-1000-2000	25.200	0.0196



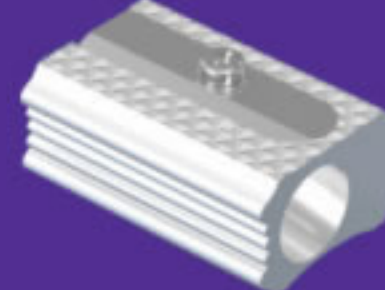
J252 DC1
One Hole Aluminium Sharpener
Diamond Cut 1

Bulk		
Packing (Pcs.)	G.Wt-Kg.	CBM
20-200-1000-2000	25.200	0.0196



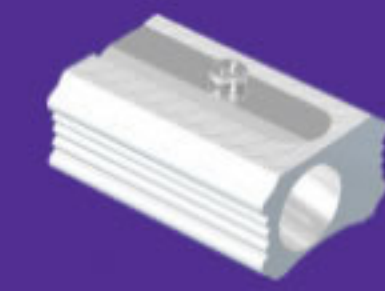
J252 DC2
One Hole Aluminium Sharpener
Diamond Cut 2

Bulk		
Packing (Pcs.)	G.Wt-Kg.	CBM
20-200-1000-2000	25.200	0.0196



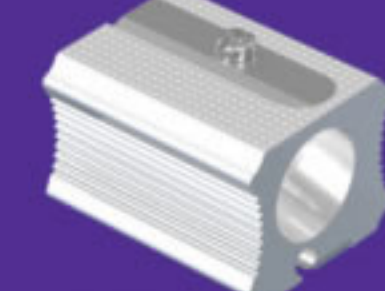
J252 DC3
One Hole Aluminium Sharpener
Diamond Cut 3

Bulk		
Packing (Pcs.)	G.Wt-Kg.	CBM
20-200-1000-2000	25.200	0.0196



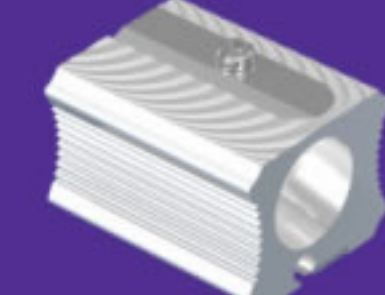
J252 DC4
One Hole Aluminium Sharpener
Diamond Cut 4

Bulk		
Packing (Pcs.)	G.Wt-Kg.	CBM
20-200-1000-2000	25.200	0.0196



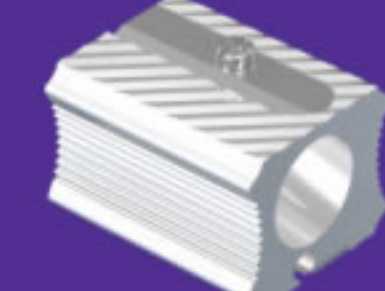
J262
Two Hole Aluminium Sharpener

Bulk		
Packing (Pcs.)	G.Wt-Kg.	CBM
20-200-1000-2000	42.800	0.0318



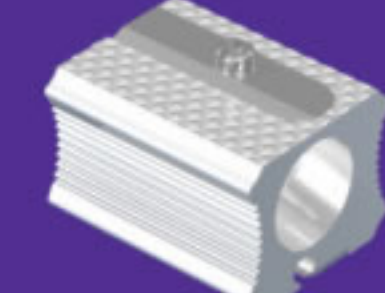
J262 DC1
Two Hole Aluminium Sharpener
Diamond Cut 1

Bulk		
Packing (Pcs.)	G.Wt-Kg.	CBM
20-200-1000-2000	42.800	0.0318



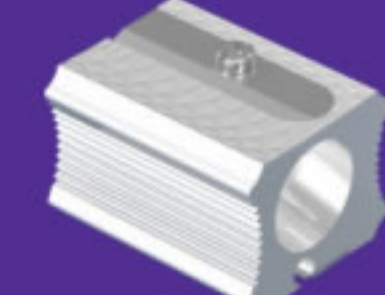
J262 DC2
Two Hole Aluminium Sharpener
Diamond Cut 2

Bulk		
Packing (Pcs.)	G.Wt-Kg.	CBM
20-200-1000-2000	42.800	0.0318



J262 DC3
Two Hole Aluminium Sharpener
Diamond Cut 3

Bulk		
Packing (Pcs.)	G.Wt-Kg.	CBM
20-200-1000-2000	42.800	0.0318



J262 DC4
Two Hole Aluminium Sharpener
Diamond Cut 4

Bulk		
Packing (Pcs.)	G.Wt-Kg.	CBM
20-200-1000-2000	42.800	0.0318

pointing in the right direction



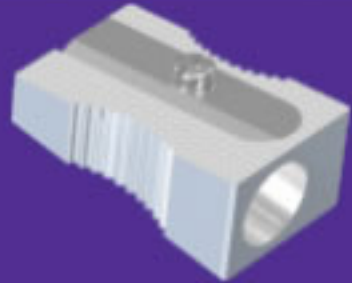
PENCIL SHARPENERS

AFILALAPIZ

TAILLE-CRAYONS

BLEISTIFTSPITZER

Pencil Sharpeners-Compasses



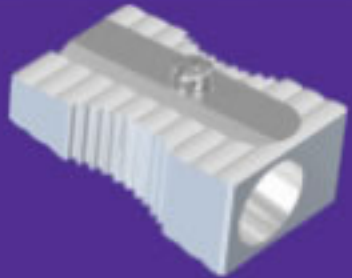
J282
One Hole Aluminium Sharpener
(V Shape)

Bulk		
Packing (Pcs.)	G.Wt-Kg.	CBM
20-200-1000-4000	32.800	0.0243



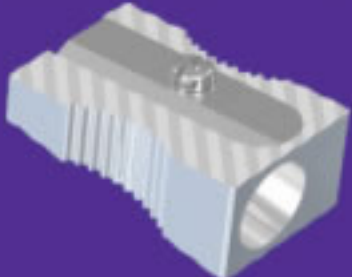
J282 R
One Hole Aluminium Sharpener
(V Shape & Round Corners)

Bulk		
Packing (Pcs.)	G.Wt-Kg.	CBM
20-200-1000-4000	31.000	0.0243



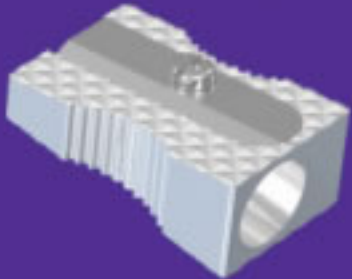
J282 DC1
One Hole Aluminium Sharpener
(V Shape) Diamond Cut 1

Bulk		
Packing (Pcs.)	G.Wt-Kg.	CBM
20-200-1000-4000	31.000	0.0243



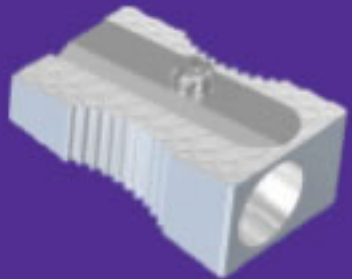
J282 DC2
One Hole Aluminium Sharpener
(V Shape) Diamond Cut 2

Bulk		
Packing (Pcs.)	G.Wt-Kg.	CBM
20-200-1000-4000	31.000	0.0243



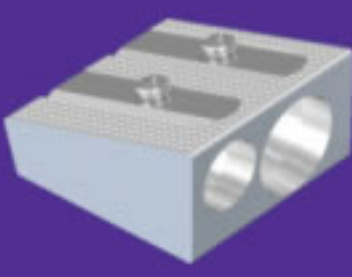
J282 DC3
One Hole Aluminium Sharpener
(V Shape) Diamond Cut 3

Bulk		
Packing (Pcs.)	G.Wt-Kg.	CBM
20-200-1000-4000	31.000	0.0243



J282 DC4
One Hole Aluminium Sharpener
(V Shape) Diamond Cut 4

Bulk		
Packing (Pcs.)	G.Wt-Kg.	CBM
20-200-1000-4000	31.000	0.0243



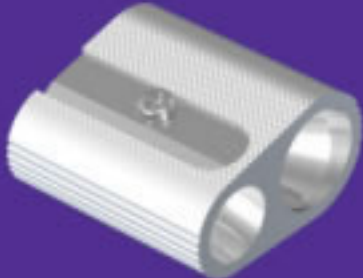
J292
Two Hole Aluminium Sharpener
(Wedge Shape)

Bulk		
Packing (Pcs.)	G.Wt-Kg.	CBM
20-200-1000-2000	32.000	0.0251



J292 DB
Two Hole Aluminium Sharpener
(Wedge Shape) in Plastic Box

Bulk		
Packing (Pcs.)	G.Wt-Kg.	CBM
20-100-500-1000	33.000	0.0205



J293
Two Hole Aluminium Sharpener

Bulk		
Packing (Pcs.)	G.Wt-Kg.	CBM
10-100-500-1500	32.000	0.0281



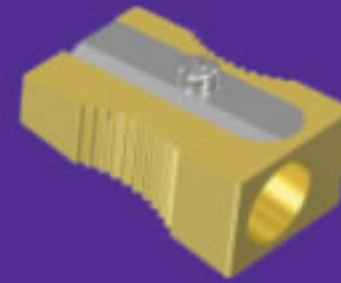
J382
One Hole Aluminium Sharpener
(V Shape) in Plastic Container

Bulk		
Packing (Pcs.)	G.Wt-Kg.	CBM
10-500	14.000	0.0668



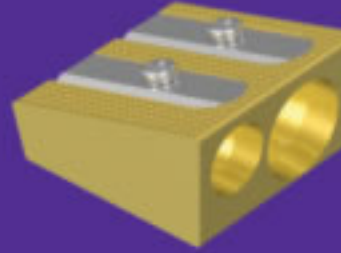
J392
Two Hole Aluminium Sharpener
(Wedge Shape) in Plastic Container

Bulk		
Packing (Pcs.)	G.Wt-Kg.	CBM
10-500	17.000	0.0668



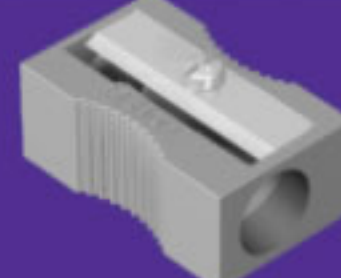
J482
One Hole Brass Sharpener
(V Shape)

Bulk		
Packing (Pcs.)	G.Wt-Kg.	CBM
20-100-1000	20.000	0.0074



J492
Two Hole Brass Sharpener
(Wedge Shape)

Bulk		
Packing (Pcs.)	G.Wt-Kg.	CBM
20-100-800	29.000	0.0093



J542
One Hole Zinc-Alloy (Mazak) Sharpener

Bulk		
Packing (Pcs.)	G.Wt-Kg.	CBM
20-200-1000-2000	26.000	0.0190



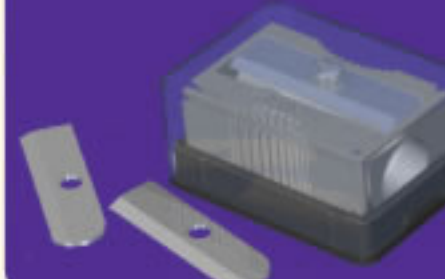
J542 DB
One Hole Zinc-Alloy (Mazak) Sharpener
in Plastic Box

Bulk		
Packing (Pcs.)	G.Wt-Kg.	CBM
20-200-1000-2000	35.000	0.0333



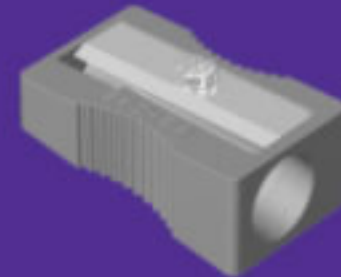
J542 DB / SB1
One Hole Zinc-Alloy (Mazak) Sharpener
in Plastic Box with 1 Spares Blades

Bulk		
Packing (Pcs.)	G.Wt-Kg.	CBM
20-200-1000-2000	36.500	0.0333



J542 DB / SB2
One Hole Zinc-Alloy (Mazak) Sharpener
in Plastic Box with 2 Spares Blades

Bulk		
Packing (Pcs.)	G.Wt-Kg.	CBM
20-200-1000-2000	38.000	0.0333



J582
One Hole Zinc-Alloy (Mazak) Sharpener
(Wedge Shape)

Bulk		
Packing (Pcs.)	G.Wt-Kg.	CBM
20-200-1000-4000	38.500	0.0243



J642
One Hole Wooden Sharpener

Bulk		
Packing (Pcs.)	G.Wt-Kg.	CBM
20-200-1000-4000	20.000	0.0161



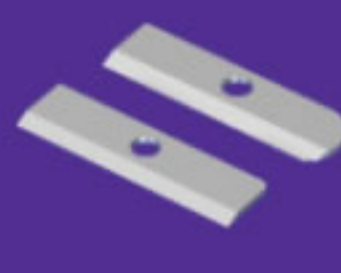
J692
Two Hole Wooden Sharpener

Bulk		
Packing (Pcs.)	G.Wt-Kg.	CBM
20-200-1000-2000	21.000	0.0430



JTRI2H
Two Hole Aluminium Sharpener
(Triangle Shape)

Bulk		
Packing (Pcs.)	G.Wt-Kg.	CBM
20-200-1000-2000	29.000	0.0227



JSB - R / SQ
Sharpener Blades
(Round / Square)

Bulk		
Packing (Pcs.)	G.Wt-Kg.	CBM
100-2000-20000	15.000	0.0095

pointing in the right direction



Pencil Sharpeners-Compasses

COMPASSES
BRÚJULAS
COMPAS
KOMPASSE

JP - 1033

(Case 40mm x 150mm)



- J 103 Strip Spring Compass (MCD : 30mm)
with • Inker 3.5Ø • Lead Box 2mm

KP 1033	Pcs. Qty.	L x W x H, mm	Gr. Wt. Kgs.	Cu. Mtr. CBM
	300	434x378x335	27.80	0.0549
	25	212x184x105	2.25	0.0040

JP - 1113

(Case 40mm x 150mm)



- J 111 Gear Head Bow Compass (MCD : 90mm)
with • Inker 3.5Ø • Lead Box 2mm

KP 1113	Pcs. Qty.	L x W x H, mm	Gr. Wt. Kgs.	Cu. Mtr. CBM
	300	434x378x335	30.40	0.0549
	25	212x184x105	2.45	0.0040

JP - 2222

(Case 40mm x 150mm)



- J 222 Gear Head Compass (MCD : 225mm), Hinged Needle Leg
with • Pencil

KP 2222	Pcs. Qty.	L x W x H, mm	Gr. Wt. Kgs.	Cu. Mtr. CBM
	300	434x378x335	30.67	0.0549
	25	212x184x105	2.47	0.0040

JP - 2241

(Case 40mm x 150mm)

J - 2241 (WALLET)

(Wallet 35mm x 160mm)



- J 224 Gear Head Compass (MCD : 225mm)
Hinged Needle & Lead Legs

KP 2241	Pcs. Qty.	L x W x H, mm	Gr. Wt. Kgs.	Cu. Mtr. CBM
	300	434x378x335	27.35	0.0549
	25	212x184x105	2.20	0.0040

K 2241	Pcs. Qty.	L x W x H, mm	Gr. Wt. Kgs.	Cu. Mtr. CBM
	600	466x366x220	28.61	0.0375
	25	178x152x50	1.10	0.0013

JP - 2242

(Case 40mm x 150mm)



- J 224 Gear Head Compass (MCD : 225mm), Hinged Needle & Lead Legs
with • Lead Box 2mm

KP 2242	Pcs. Qty.	L x W x H, mm	Gr. Wt. Kgs.	Cu. Mtr. CBM
	300	434x378x335	27.90	0.0549
	25	212x184x105	2.25	0.0040

JP - 2243

(Case 40mm x 150mm)



- J 224 Gear Head Compass (MCD : 225mm), Hinged Needle & Lead Legs
with • Universal Adapter 3Ø • Lead Box 2mm

KP 2243	Pcs. Qty.	L x W x H, mm	Gr. Wt. Kgs.	Cu. Mtr. CBM
	300	434x378x335	30.97	0.0549
	25	212x184x105	2.50	0.0040

pointing in the right direction



Pencil Sharpeners-Compasses

**COMPASSES
BRÚJULAS
COMPAS
KOMPASSE**

JP - 2245

(Case 45mm x 180mm)



- J 224 Gear Head Compass (MCD : 225mm), Hinged Needle & Lead Leg with • Inker 3Ø • Pointer 3Ø • Plastic Holder 3Ø • Lead Box 2mm

KP	Pcs.	L x W x H, mm	Gr. Wt.	Cu. Mtr.
2245	Qty.		Kgs.	CBM
	200	530x434x230	24.47	0.0529
	25	260x212x105	2.91	0.0058

JP - 2246

(Case 75mm x 180mm)



- J 224 Gear Head Compass (MCD : 225mm), Hinged Needle & Lead Legs with • Inker 3Øt • Pointer 3Ø • two Plastic Holders 3Ø • Lead Box 2mm

KP	Pcs.	L x W x H, mm	Gr. Wt.	Cu. Mtr.
2246	Qty.		Kgs.	CBM
	120	520x430x280	19.10	0.0626
	10	210x170x130	1.50	0.0046

JP - 2247

(Case 75mm x 180mm)



- J 224 Gear Head Compass (MCD : 225mm), Hinged Needle & Lead Legs with • two Inkers 3Ø • Pointer 3Ø • Plastic Holder 3Ø • Extension Bar 3Ø Spigot • Lead Box 2mm

KP	Pcs.	L x W x H, mm	Gr. Wt.	Cu. Mtr.
2247	Qty.		Kgs.	CBM
	120	520x430x280	20.90	0.0626
	10	210x170x130	1.65	0.0046

JP - 2249

(Case 75mm x 180mm)



- J 224 Gear Head Compass (MCD : 225mm), Hinged Needle & Lead Legs with • J 102 Compass(MCD : 50mm) • Universal Adapter 3Ø • two Inkers 3Ø • Pointer 3Ø • two Plastic Holder 3Ø • Lead Box 2mm

KP	Pcs.	L x W x H, mm	Gr. Wt.	Cu. Mtr.
2249	Qty.		Kgs.	CBM
	120	520x430x280	24.05	0.0626
	10	210x170x130	1.90	0.0046

pointing in the right direction

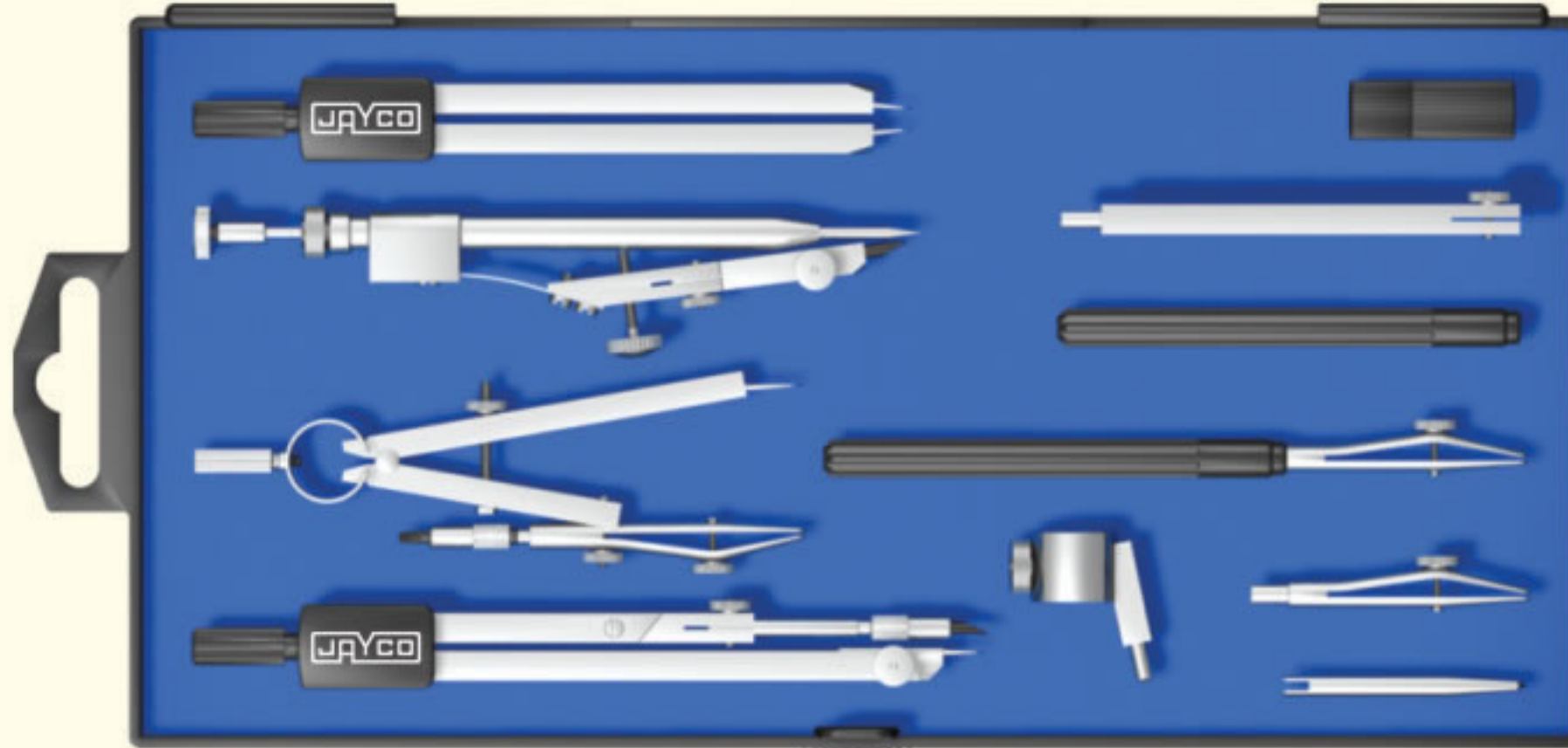


Pencil Sharpeners-Compasses

COMPASSES
BRÚJULAS
COMPAS
KOMPASSE

JP - 22412

(Case 120mm x 235mm)

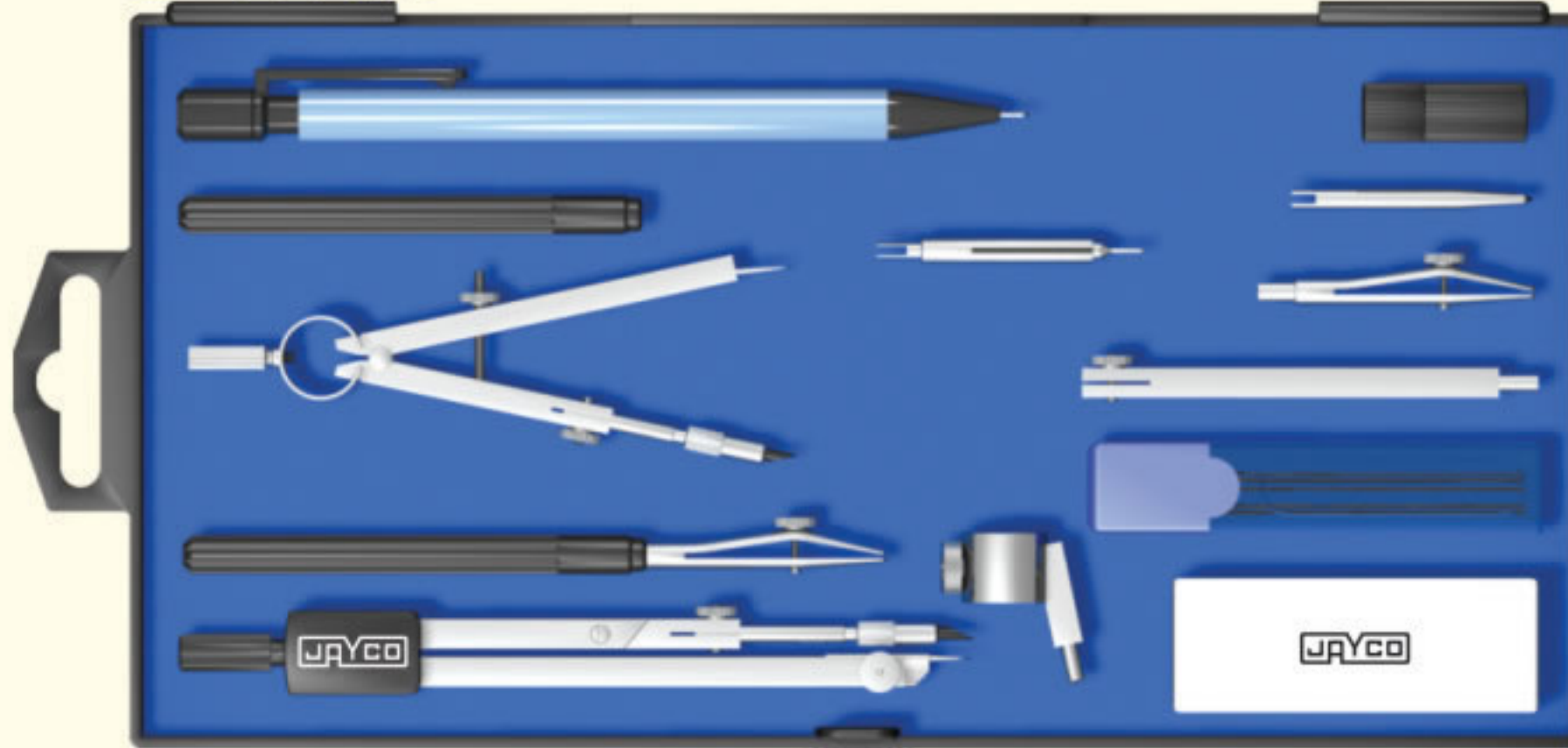


KP	Pcs.	L x W x H, mm	Gr. Wt.	Cu. Mtr.
22412	Qty.		Kgs.	CBM
	60	772x276x324	23.90	0.0690
	10	266x254x152	3.80	0.0102

- J 224 Gear Head Compass (MCD : 225mm), Hinged Needle & Lead Leg with • J 102 Compass (MCD : 50mm) • J 103 Compass(MCD : 30mm) • Small Divider (MCD : 250mm) • Universal Adapter 3Ø • two Inkers 3Ø • Pointer 3Ø • two Plastic Holder 3Ø • Extension Bar 3Ø • Lead Box 2mm

JP - 22414

(Case 120mm x 235mm)



KP	Pcs.	L x W x H, mm	Gr. Wt.	Cu. Mtr.
22414	Qty.		Kgs.	CBM
	60	772x276x324	21.45	0.0690
	10	266x254x152	3.35	0.0102

- J 224 Gear Head Compass (MCD : 225mm), Hinged Needle & Lead Legs with • J 101 Compass (MCD : 50mm) • Universal Adapter 3Ø • two Inkers 3Ø • Pointer 3Ø • two Plastic Holder 3Ø • Extension Bar 3Ø • Ball Point Tip Holder • Lead Box 2mm • Lead Box 0.5mm • Eraser • Mechanical Pencil 0.5mm

JP - 22416

(Case 120mm x 235mm)



KP	Pcs.	L x W x H, mm	Gr. Wt.	Cu. Mtr.
22416	Qty.		Kgs.	CBM
	60	772x276x324	22.30	0.0690
	10	266x254x152	3.48	0.0102

- J 224 Gear Head Compass (MCD : 225mm), Hinged Needle & Lead Legs with • J 101 Compass (MCD : 50mm) • Universal Adapter 3Ø • two Inkers 3Ø • Pointer 3Ø • two Plastic Holder 3Ø • Extension Bar 3Ø • Ball Point Tip Holder • Lead Sharpener • Lead Box 2mm • Lead Box 0.5mm • Eraser • Mechanical Pencil 0.5mm • Inking Pen

pointing in the right direction



Pencil Sharpeners-Compasses

**COMPASSES
BRÚJULAS
COMPAS
KOMPASSE**

**JP - 2261
J - 2261 (WALLET)**

(Case 40mm x 150mm)
(Wallet 35mm x 160mm)



• J 226 Gear Head Compass (MCD : 200mm)

KP 2261	Pcs. Qty.	L x W x H, mm	Gr. Wt. Kgs.	Cu. Mtr. CBM
	300	434x378x335	26.62	0.0549
	25	212x184x105	2.14	0.0040

K 2261	Pcs. Qty.	L x W x H, mm	Gr. Wt. Kgs.	Cu. Mtr. CBM
	600	466x366x220	27.18	0.0375
	25	178x152x50	1.10	0.0013

JP - 2264

(Case 40mm x 150mm)



• J 226 Gear Head Compass (MCD : 200mm)
with • Pointer 3Ø • Plastic Holder 3Ø • Lead Box 2mm

KP 2264	Pcs. Qty.	L x W x H, mm	Gr. Wt. Kgs.	Cu. Mtr. CBM
	300	434x378x335	28.15	0.0549
	25	212x184x105	2.25	0.0040

JP - 2265

(Case 45mm x 180mm)



• J 226 Gear Head Compass (MCD : 200mm)
with • Inker 3Ø • Pointer 3Ø • Plastic Holder 3Ø • Lead Box 2mm

KP 2265	Pcs. Qty.	L x W x H, mm	Gr. Wt. Kgs.	Cu. Mtr. CBM
	200	530x434x230	24.00	0.0529
	25	260x212x105	2.85	0.0058

JP - 2267

(Case 75mm x 180mm)



• J 226 Gear Head Compass (MCD : 200mm)
with • two Inkers 3Ø • Pointer 3Ø • two Plastic Holder 3Ø • Lead Box 2mm

KP 2267	Pcs. Qty.	L x W x H, mm	Gr. Wt. Kgs.	Cu. Mtr. CBM
	120	520x430x280	18.05	0.0626
	10	210x170x130	1.50	0.0046

JP - 2268

(Case 75mm x 180mm)



• J 226 Gear Head Compass (MCD : 200mm)
with • K 102 Compass (MCD : 50mm) • two Inkers 3Ø • Pointer 3Ø • two Plastic Holder 3Ø • Lead Box 2mm

KP 2268	Pcs. Qty.	L x W x H, mm	Gr. Wt. Kgs.	Cu. Mtr. CBM
	120	520x430x280	21.18	0.0626
	10	210x170x130	1.78	0.0046

pointing in the right direction



Pencil Sharpeners-Compasses

**COMPASSES
BRÚJULAS
COMPAS
KOMPASSE**

JP - 22610

(Case 75mm x 180mm)



- J 226 Gear Head Compass (MCD : 200mm Approx.) with • J 102 Compass (MCD : 50mm) • Small Divider (MCD : 250mm) • two Inkers 3Ø • Pointer 3Ø • two Plastic Holder 3Ø • Extension Bar 3Ø Spigot • Lead Box 2mm

KP	Pcs.	L x W x H, mm	Gr. Wt.	Cu. Mtr.
22610	Qty.		Kgs.	CBM
	120	520x430x280	27.38	0.0626
	10	210x170x130	2.30	0.0046

JP - 3323

(Case 45mm x 180mm)



- J 332 Gear Head Compass (MCD : 250mm), Hinged Needle & Lead Legs with • Universal Adapter 3.5Ø • Lead Box 2mm

KP	Pcs.	L x W x H, mm	Gr. Wt.	Cu. Mtr.
3323	Qty.		Kgs.	CBM
	200	530x434x230	29.15	0.0529
	25	260x212x105	3.50	0.0058

JP - 3325

(Case 45mm x 180mm)



- J 332 Gear Head Compass (MCD : 250mm), Hinged Needle & Lead Legs with • Universal Adapter 3.5Ø • Inker 3.5Ø • Hinged Extension Bar 3.5Ø Spigot • Lead Box 2mm

KP	Pcs.	L x W x H, mm	Gr. Wt.	Cu. Mtr.
3325	Qty.		Kgs.	CBM
	200	530x434x230	32.80	0.0529
	25	260x212x105	3.95	0.0058

JP - 3327

(Case 75mm x 180mm)



- J 332 Gear Head Compass (MCD : 250mm), Hinged Needle & Lead Legs with • J 111 Compass (MCD : 90mm) • Universal Adapter 3.5Ø • Inker 3.5Ø • Pointer 3.5Ø • Plastic Holder 3.5Ø • Lead Box 2mm

KP	Pcs.	L x W x H, mm	Gr. Wt.	Cu. Mtr.
3327	Qty.		Kgs.	CBM
	120	520x430x280	26.45	0.0626
	10	210x170x130	2.20	0.0046

JP - 3333

(Case 45mm x 180mm)



- J 333 Gear Head Compass (MCD : 290mm), Telescopic Extension Bar, Hinged Needle & Lead Legs with • Universal Adapter 3.5Ø • Lead Box 2mm

KP	Pcs.	L x W x H, mm	Gr. Wt.	Cu. Mtr.
3333	Qty.		Kgs.	CBM
	200	530x434x230	29.15	0.0529
	25	260x212x105	3.50	0.0058

pointing in the right direction

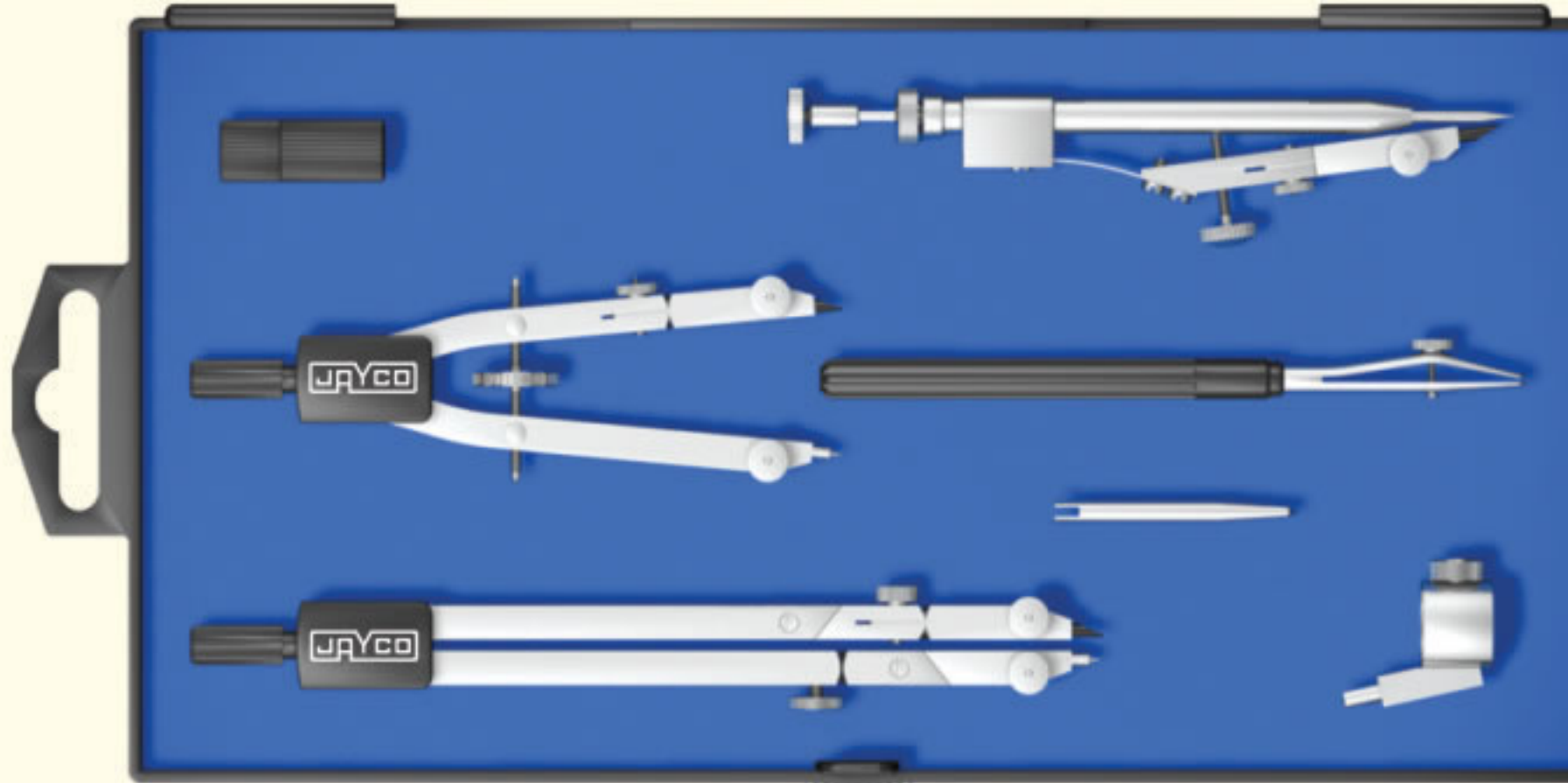


Pencil Sharpeners-Compasses

**COMPASSES
BRÚJULAS
COMPAS
KOMPASSE**

JP - 3338

(Case 120mm x 235mm)

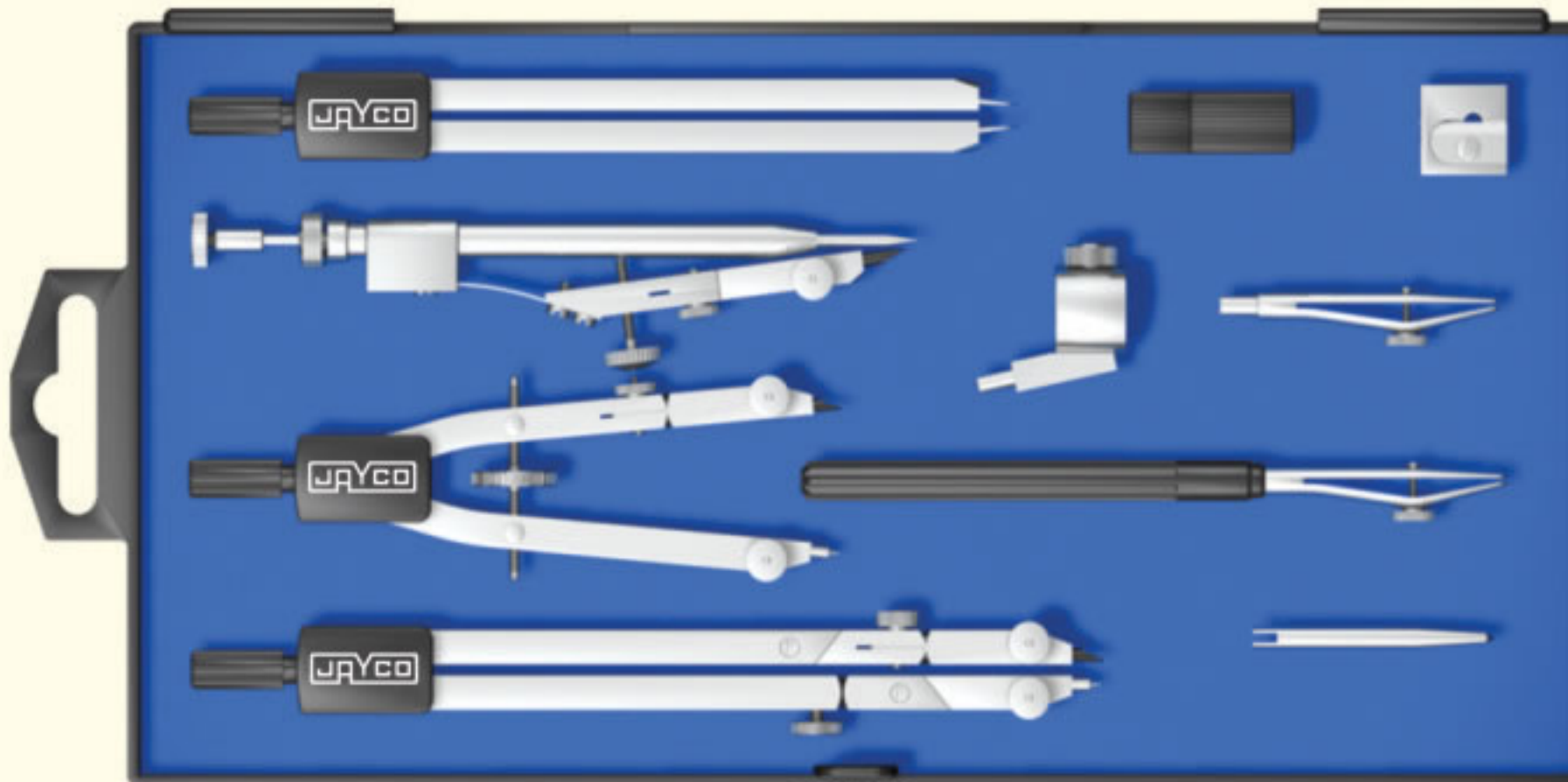


KP	Pcs. Qty.	L x W x H, mm	Gr. Wt. Kgs.	Cu. Mtr. CBM
	60	772x276x324	21.55	0.0690
	10	266x254x152	3.60	0.0102

• J 333 Gear Head Compass (MCD : 290mm), Telescopic Extension Bar, Hinged Needle & Lead Legs with • J 103 Compass (MCD : 30mm) • J 111 Compass (MCD : 90mm) • Universal Adapter 3.5Ø • Inker 3.5Ø • Pointer 3.5Ø • Plastic Holder 3.5Ø • Lead Box 2mm

JP - 33311

(Case 120mm x 235mm)

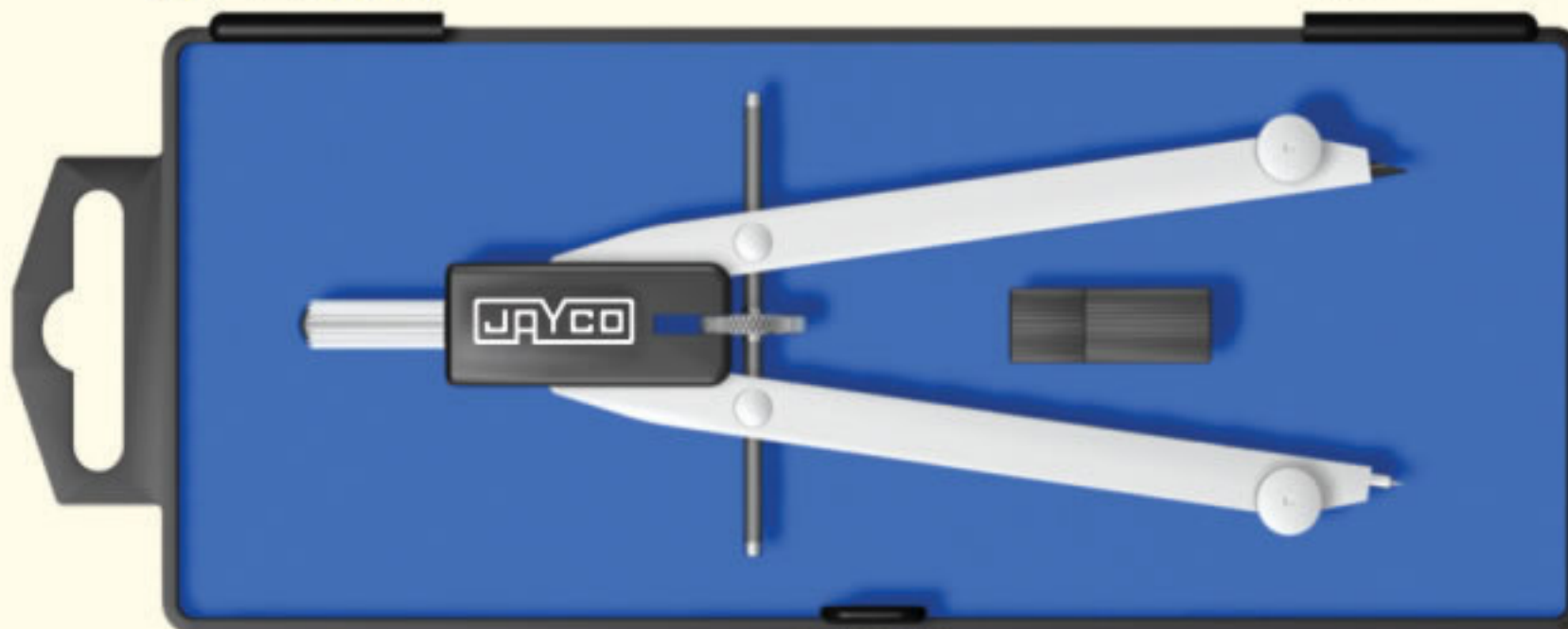


KP	Pcs. Qty.	L x W x H, mm	Gr. Wt. Kgs.	Cu. Mtr. CBM
	60	772x276x324	24.53	0.0690
	10	266x254x152	4.10	0.0102

• J 333 Gear Head Compass (MCD : 290mm), Telescopic Extension Bar, Hinged Needle & Lead Legs with • J 103 Compass (MCD : 30mm) • J 111 Compass (MCD : 90mm) • Big Divider (MCD : 320mm) • Universal Adapter 3.5Ø • two Inkers 3.5Ø • Pointer 3.5Ø • Plastic Holder 3.5Ø • Lead Sharpener • Lead Box 2mm

JP - 4412

(Case 75mm x 180mm)



KP	Pcs. Qty.	L x W x H, mm	Gr. Wt. Kgs.	Cu. Mtr. CBM
	120	520x430x280	23.20	0.0626
	10	210x170x130	1.95	0.0046

• J 441 Gear Head Bow Compass (MCD : 280mm) with • Lead Box 2mm

pointing in the right direction

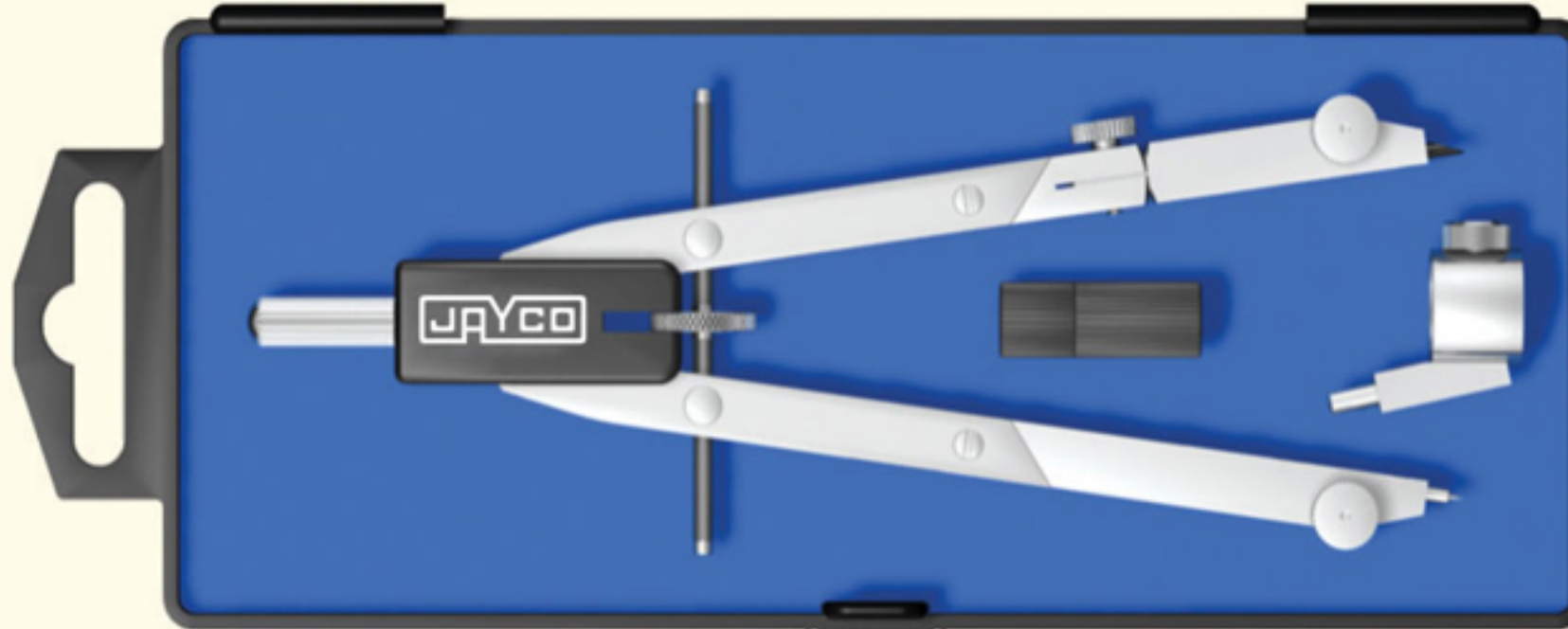


Pencil Sharpeners-Compasses

**COMPASSES
BRÚJULAS
COMPAS
KOMPASSE**

JP - 4423

(Case 75mm x 180mm)

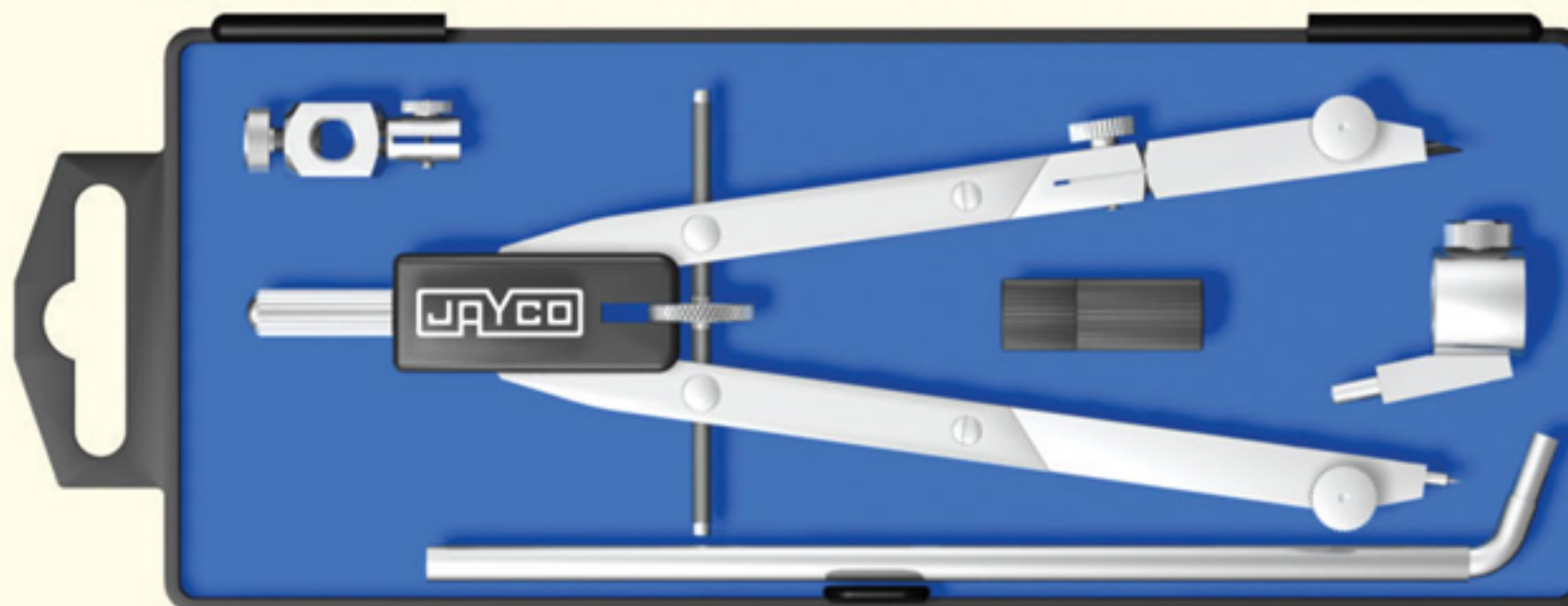


• J 442 Gear Head Bow Compass (MCD : 330mm), Hinged Needle & Lead Legs with • Universal Adapter 4Ø • Lead Box 2mm

KP	Pcs.	L x W x H, mm	Gr. Wt.	Cu. Mtr.
4423	Qty.		Kgs.	CBM
	120	520x430x280	25.60	0.0626
	10	210x170x130	2.15	0.0046

JP - 4425

(Case 75mm x 180mm)

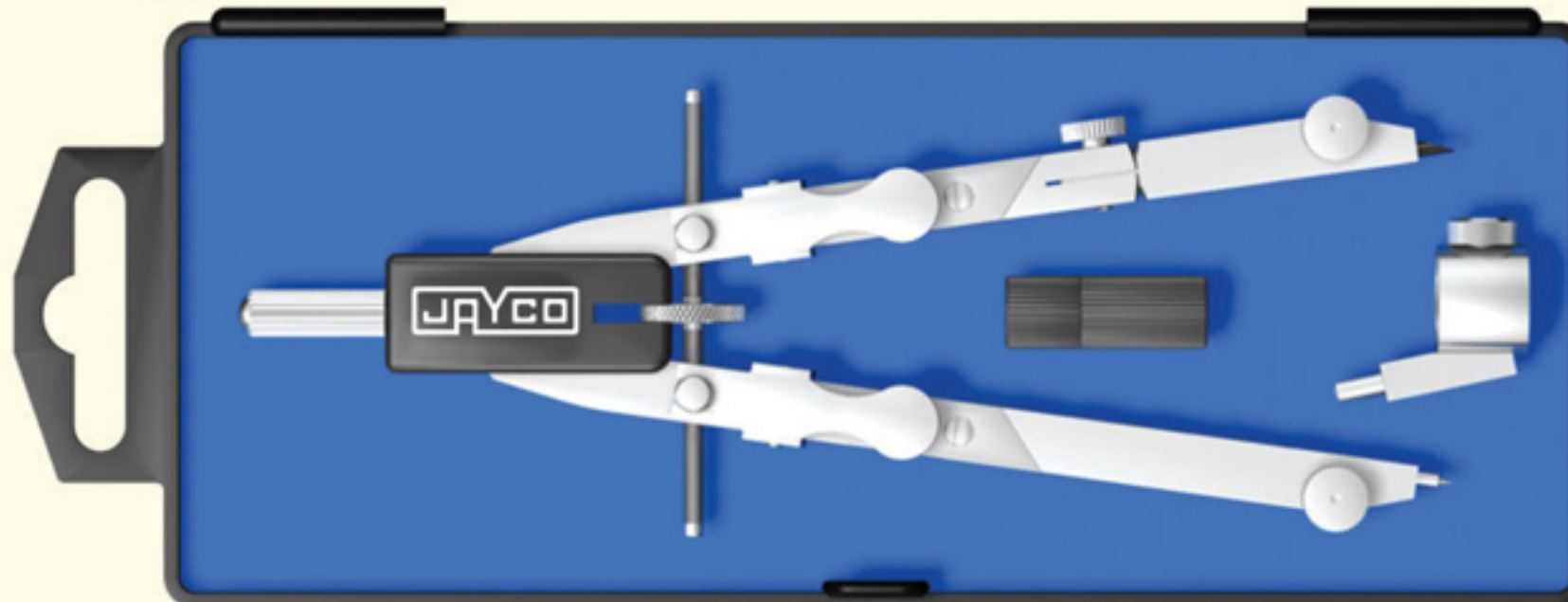


• J 442 Gear Head Bow Compass (MCD : 330mm), Hinged Needle & Lead LegS with • Universal Adapter 4Ø • Extension Bar 4Ø (MCD : 600mm) • Adapter • Lead Box 2mm

KP	Pcs.	L x W x H, mm	Gr. Wt.	Cu. Mtr.
4425	Qty.		Kgs.	CBM
	120	520x430x280	30.38	0.0626
	10	210x170x130	2.54	0.0046

JP - 4433

(Case 75mm x 180mm)

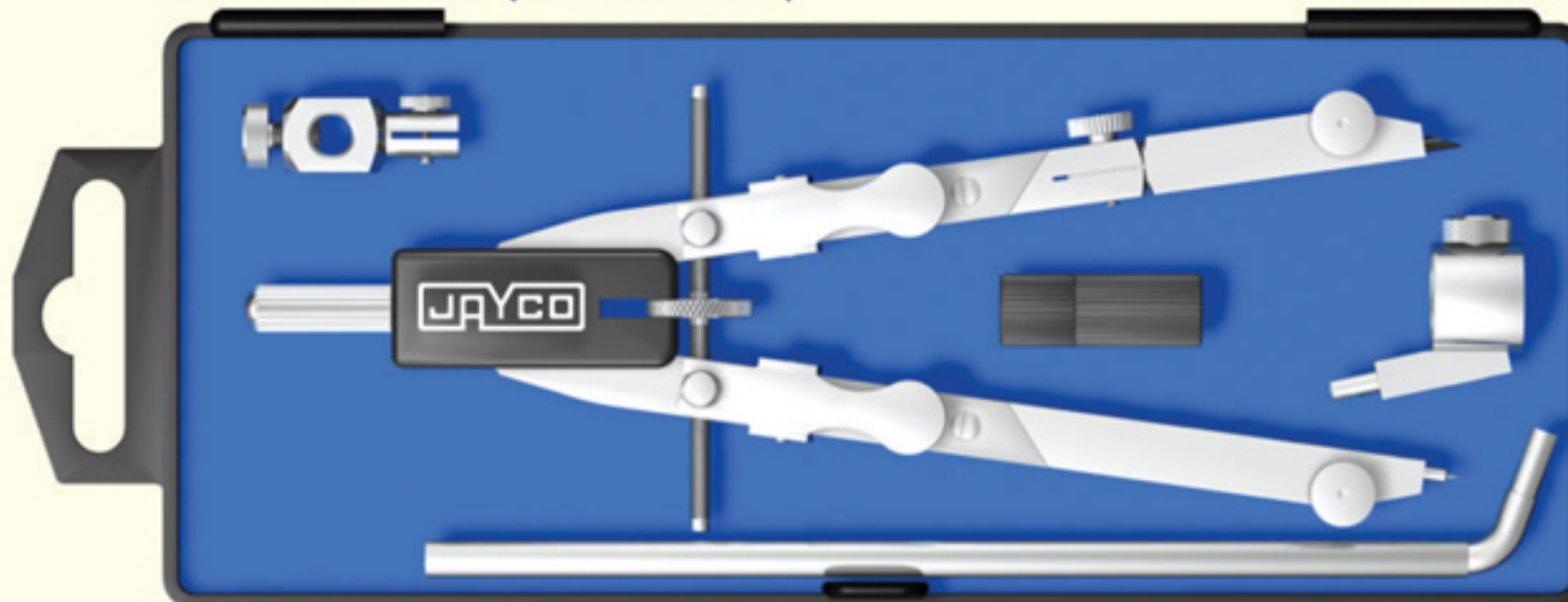


• J 443 Gear Head Bow Compass (MCD : 330mm), Hinged Needle & Lead Legs, Quick Action Adjustment with • Universal Adapter 4Ø • Lead Box 2mm

KP	Pcs.	L x W x H, mm	Gr. Wt.	Cu. Mtr.
4433	Qty.		Kgs.	CBM
	120	520x430x280	26.95	0.0626
	10	210x170x130	2.25	0.0046

**JP - 4435 (PLASTIC)
JW - 4435 (WOODEN)**

(Case 75mm x 180mm)
(Case 110mm x 205mm)



• J 443 Gear Head Bow Compass (MCD : 330mm), Hinged Needle & Lead Leg, Quick Action Adjustment with • Universal Adapter 4Ø • Extension Bar 4Ø (MCD : 600mm) • Adapter • Lead Box 2mm

KP	Pcs.	L x W x H, mm	Gr. Wt.	Cu. Mtr.
4435	Qty.		Kgs.	CBM
	120	520x430x280	31.71	0.0626
	10	210x170x130	2.65	0.0046

KW	Pcs.	L x W x H, mm	Gr. Wt.	Cu. Mtr.
4435	Qty.		Kgs.	CBM
	80	492x444x380	29.68	0.0830
	10	241x217x180	3.53	0.0094

pointing in the right direction



Pencil Sharpeners-Compasses

COMPASSES
BRÚJULAS
COMPAS
KOMPASSE

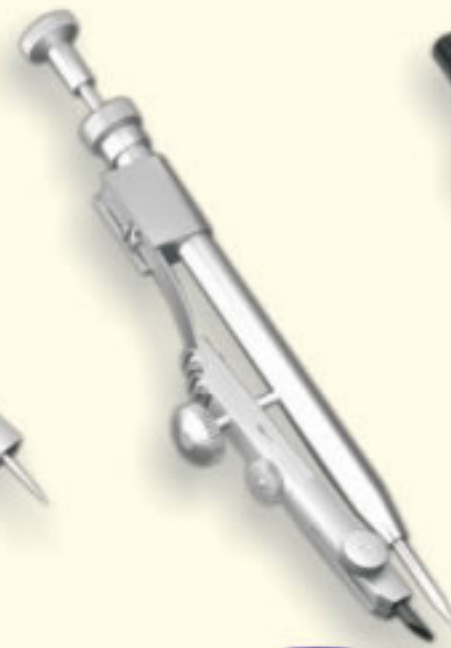
COMPASSES AND ACCESSORIES



J 101
MCD : 50MM



J 102
MCD : 50MM



J 103
MCD : 30MM



J 111
MCD : 90MM



J 112
MCD : 90MM



J 222
MCD : 225MM



J 224
MCD : 225MM



J 226
MCD : 200MM



J 332
MCD : 250MM



J 333
MCD : 290MM



SMALL DIVIDER
MCD : 250MM

BIG DIVIDER
MCD : 320MM



J 441
MCD : 280MM



J 442
MCD : 330MM



J 443
MCD : 330MM



ACCESSORIES

* ALL COMPASSES & METAL ACCESSORIES ARE NICKEL PLATED & SATIN FINISHED.
* SPECIFICATIONS IN THIS CATALOGUE ARE SUBJECT TO CHANGE WITHOUT NOTICE.



Pointing in the right direction



Pencil Sharpeners-Compasses



JAYCO INDUSTRIES

B-35 Shanker Tekri, Udyognagar,
Jamnagar - 361004 (Gujarat) INDIA

Tel. : +91 288 2560502

Cell : +91 98242 12316,+91 99090 15254

E-mail : info@jaycoindustries.co.in, jaycoppb@gmail.com

Web : www.jaycoindustries.co.in